

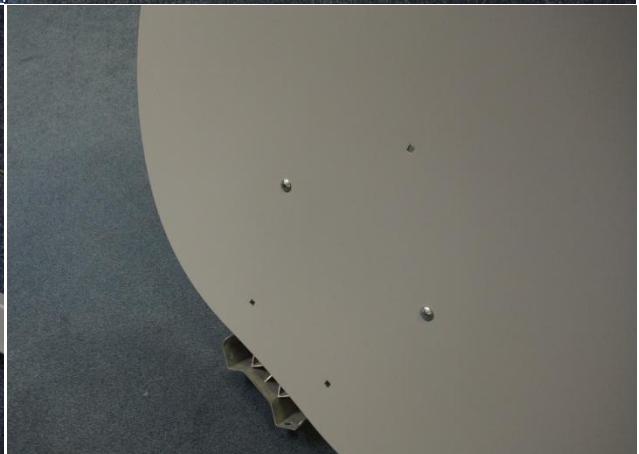
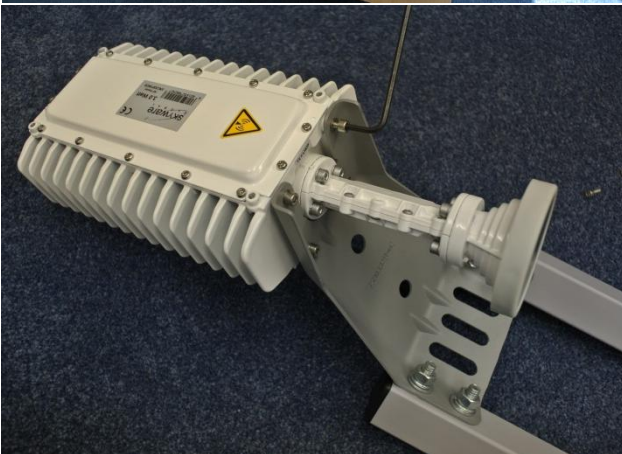
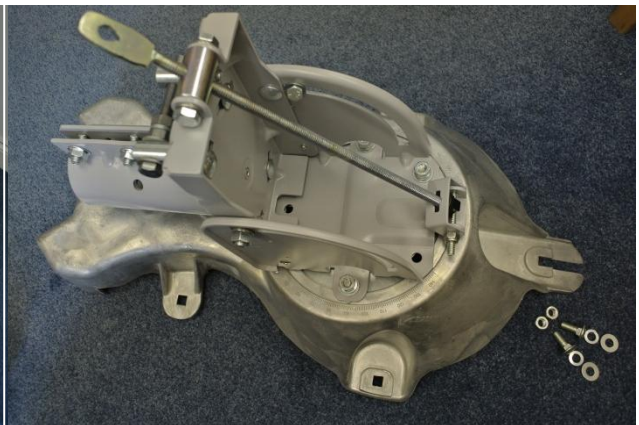
iDirect - freedomsat Dish Setup Guide

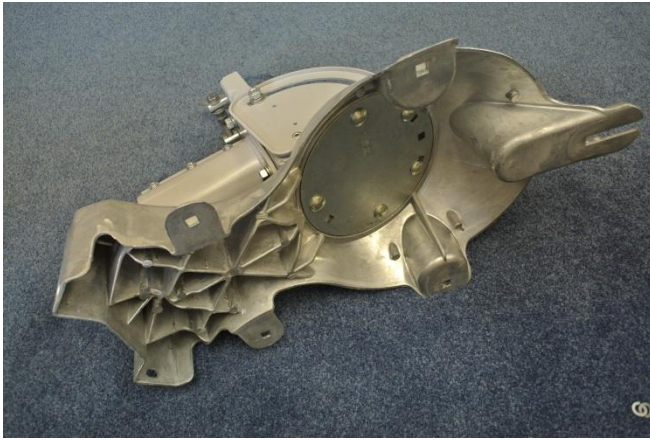
The below packages are representative of what you will be receiving.

1 x Dish (with arms)

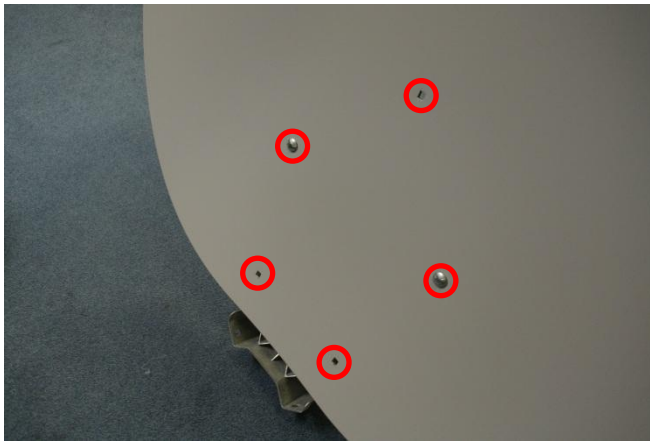
1 x Dish mount and bolts/washers

1 x TRIA (transmit and receive) with separate feed horn.





- Construct azel mount – There is an ‘A’ embossed on the front of this to ensure that you line the metal plate up correctly.



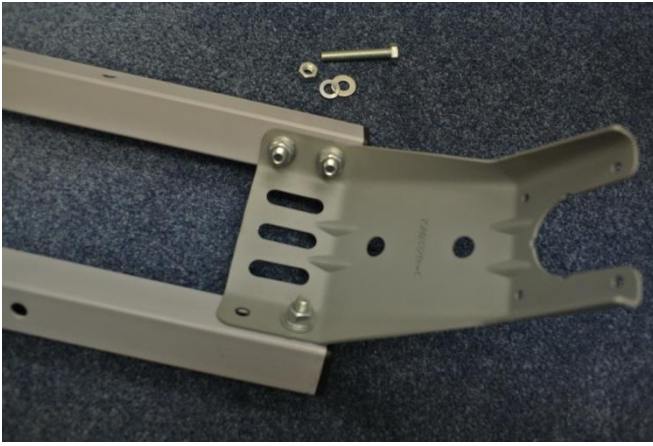
- Place the dish face down.
- Identify the screw holes. (Circled in red)



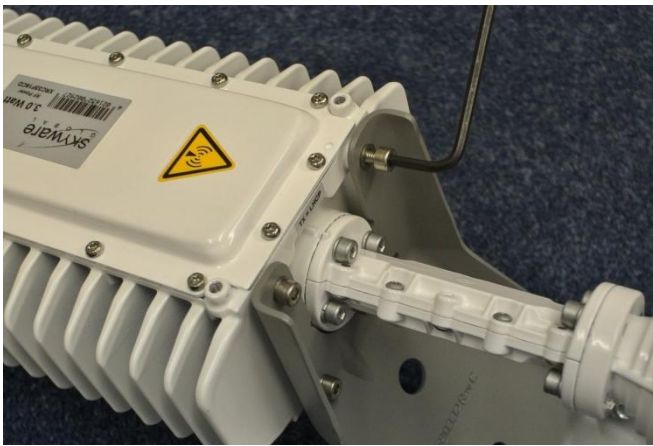
- Now you may attach the carriage bolts (round headed) from the azel mount to the front of the dish. These must be flush with the surface. No washers are needed to attach these.



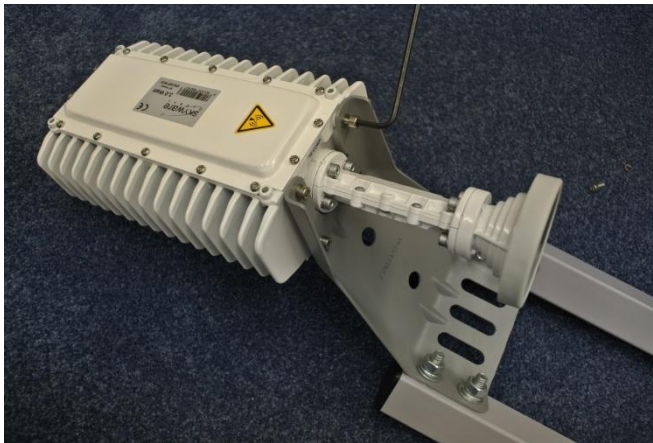
- Once completed the arms should be solid and unable to move. Screws should be the same as shown here.
- To attach the arms simply screw in the two bolts in these holes...



- The feed arm will be bolted on like this – The four screws will be attached with the large and small washers.



- There are only the four screws to secure the TRIA to the support arm. Ensure that these are all tightened.



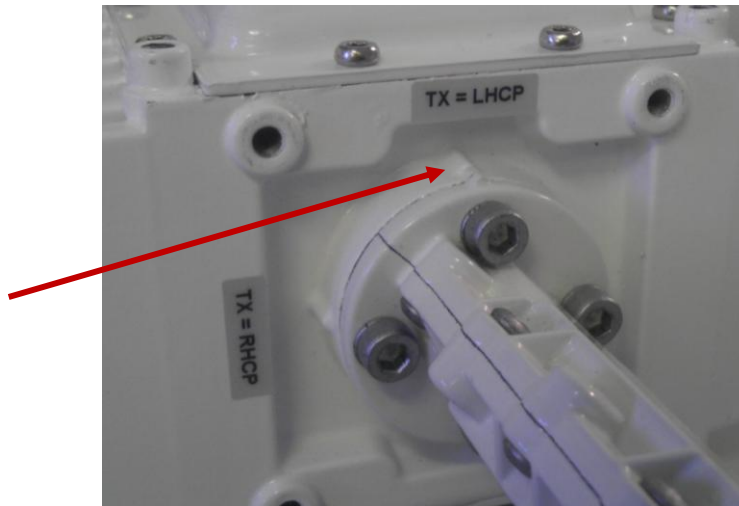
- Once the TRIA has been attached it should appear the same as the photo to the left.



- Attaching the feedhorn is a simple procedure; you simply take the four screws and washers (two for each screw) and tighten with the provided Allen key.

Changing the polarisation – To set this you will simply need to align the mark on the feed horn with the same on the TRIA. For this service you will need to have it set like the photo below.

The arrow on the feedhorn aligns with the 'TX LHCP' marker on the TRIA itself.



The completed article...

Support

Online Ticket System

<http://62.49.2.48/sitehelpdesk/user/log.asp>

Bentley Walker Support

support@bentleywalker.com

+44 23 9231 1118

www.bentley-walker.com/support

Current Throttle Status

Bentley Walker Downloads

<http://www.bentley-walker.com/support> > Customer Area

Product Documentation

Setup Video
