

# Hylas 2 – freedomsat Pointing Guide

Make sure the Modem is configured with the details sent to you before trying to find the satellite.:

If you have internet connectivity; browse to <http://www.bentley-walker.com/support> and click on “Dish Alignment”

If you do not have internet connectivity, contact support with your location and we will do this for you.



- Instructions<**
- Choose the satellite you wish to aim for
  - Input the location of the antenna
  - Click “Go!” to calculate approximate pointing angles

**Notes on Location**

The location box will accept either address information or latitude/longitude coordinates.

Such coordinates may be entered in either decimal or “degrees, minutes, seconds” format.

Positive values will represent North and East, whilst negative values will represent South and West.

For example, the coordinates <51° 28’ 43.64” North, 0° 0’ 38.44” West> should be entered as: 51 28 43.64 -0 0 38.44

**Bentley Walker Dish Pointing Utility**

Satellite:  Location:

Select the Hylas 2 Option from the drop down menu



- Instructions<**
- Choose the satellite you wish to aim for
  - Input the location of the antenna
  - Click “Go!” to calculate approximate pointing angles

**Notes on Location**

The location box will accept either address information or latitude/longitude coordinates.

Such coordinates may be entered in either decimal or “degrees, minutes, seconds” format.

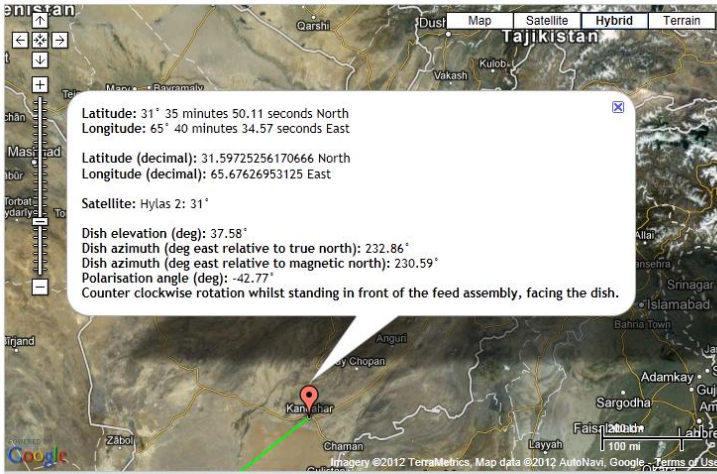
Positive values will represent North and East, whilst negative values will represent South and West.

For example, the coordinates <51° 28’ 43.64” North, 0° 0’ 38.44” West> should be entered as: 51 28 43.64 -0 0 38.44

**Bentley Walker Dish Pointing Utility**

Satellite:  Location:

Once you have located your location on the map, click on it.



**Instructions**

- Choose the satellite you wish to aim for
- Input the location of the antenna
- Click "Go!" to calculate approximate pointing angles

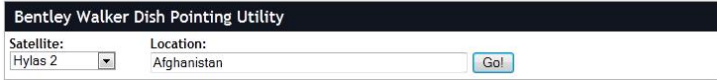
**Notes on Location**

The location box will accept either address information or latitude/longitude coordinates.

Such coordinates may be entered in either decimal or "degrees, minutes, seconds" format.

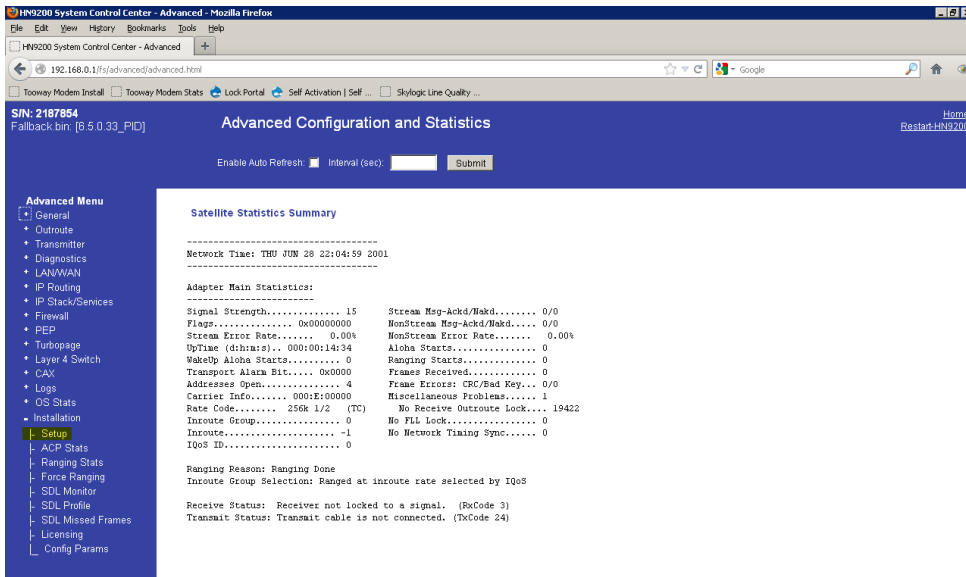
Positive values will represent North and East, whilst negative values will represent South and West.

For example, the coordinates <51° 28' 43.64" North, 0° 0' 38.44" West> should be entered as: 51 28 43.64 -0 0 38.44

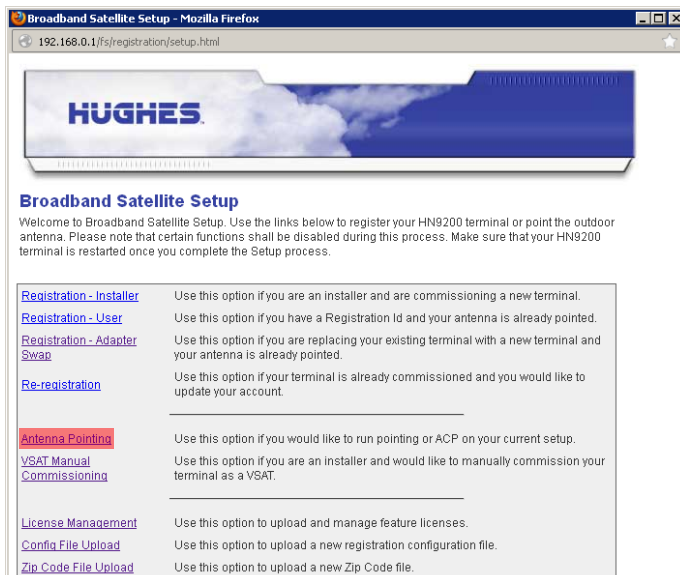


This will display the azimuth and elevation to set on your dish to start looking for the satellite.

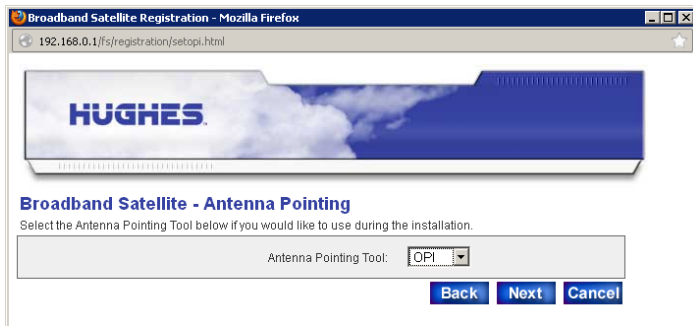
Once the azimuth and elevation is set browse to <http://192.168.0.1/fs/advanced/advanced.html>



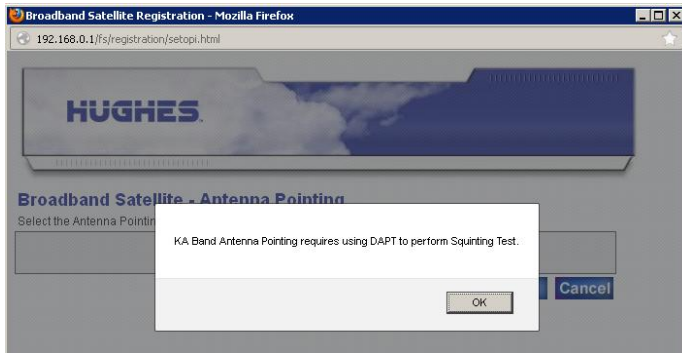
Click Installation and then Setup



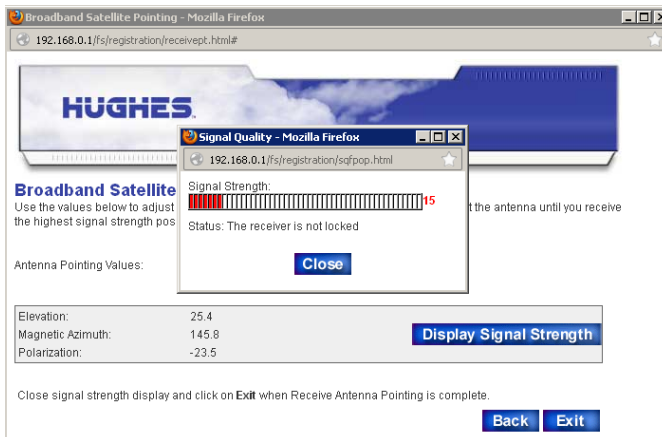
Click Antenna Pointing



Select OPI from the Drop down Menu



Click "OK"



This will display your signal strength; you will not obtain signal strength greater than 29 unless you are locked to the satellite. You may need to make adjustments to both azimuth and elevation until a signal is obtained.

Once it is locked you can fine tune the signal to achieve 92 or above.

## Support

Online Ticket System

<http://62.49.2.48/sitehelpdesk/user/log.asp>

Bentley Walker Support

[support@bentleywalker.com](mailto:support@bentleywalker.com)

+44 23 9231 1118

[www.bentley-walker.com/support](http://www.bentley-walker.com/support)